

Description

- 1-12 metre sensing range
- 16 to 56 parallel scanning beams
- Active height of 1800 mm to 2520 mm
- Detector length of 1928 mm to 2648 mm
- 3 different channel placement models
- Cable or plug connection
- Automatic sensitivity adjustment
- Compact aluminium IP67 detector housing
- Power, output and system status indicators
- 12-30 V dc supply voltage
- 5 wire solid state relay output
- Test inputs
- EN 12978 compliant
- TÜV approved as E-device acc. EN 12453



The SG 15 series is especially designed as a safety device for doors and gates. The system is approved by TÜV to be an E-device according to EN 12453, allowing it to be a stand-alone safety device on a power operated door or gate.

The SG 15 light curtain system consists of a self-contained transmitter, SGT and receiver, SGR, which are to be positioned opposite of each other. The units are housed in a compact, but sturdy, aluminium profile (25,5 x 14,3 mm) with a dual side rail design ensuring versatile mounting.

The system is supplied with a 12-30 V dc power supply. The SGR includes a 5 wire, solid state relay output. Both the SGT and SGR include a test input which are activated simultaneously for system test purposes.

The advanced automatic signal-tracking (AST) feature ensures that no onsite set up or adjustments are required. The signal of each individual channel is adjusted automatically, which

compensates for misalignment and contamination during operation. Transmitter and receiver units are optically synchronised.

The SG 15 series features the Dynamic Sequential Blanking Function which allows the detectors to be positioned in the guide tracks of an industrial door, where the door travels directly in front of the protection area, interrupting the beams sequentially from top to bottom. The special feature ensures that the system can distinguish between the closing door and an object by ignoring the beams that are obstructed by the moving door whilst leaving the below remaining beams active to detect an object in the protection area.

Both the transmitter and receiver detectors are protected against reverse polarity of power supplies, control input and output signals. The output is also protected against short circuit and inductive loads.

Technical Data		SGT	SGR
Supply voltage		12-30 V dc	
Current consumption		70 mA (RMS)	30 mA
Max output load	Solid state	–	100 mA
Short circuit protected		–	Yes
Inductive load protection		–	Yes
Reverse polarity protected		Yes	
Number of channels (diodes per detector)		16, 18, 20, 28, 30, 32, 40, 48 or 56	
Number of parallel beams		16, 18, 20, 28, 30, 32, 40, 48 or 56	
Active height		1800, 2160 or 2520 mm	
Bottom spacing to Ch 1		45 mm	
Channel spacing	C1	45 mm : all channels	
	D1	45 mm : up to 1035 mm and two top channels 180 mm : from 1035 mm to top	
	E1	45 mm : up to 315 mm and two top channels 180 mm : from 315 mm to top	
Response time		–	50 ms
Maximum sequential blanking speed		0,9 m/s	
Minimum size of detectable objects		50 mm / 200 mm	
Power on indicator		Green LED	
Output indicator		–	Yellow LED
System status indicator		Red LED	
Light source		Infrared (880 nm)	–
Opening angle		–	+/- 4°
Emission angle		+/- 5°	–
Housing dimensions (w x d)		25,5 mm x 14,3 mm	
Housing material	Profile	Aluminium (black anodised)	
	Lens cover	Polycarbonate	
Connection		15 m fixed cable or 5 pin, M12 plug	5 m fixed cable or 5 pin, M12 plug

Environmental Data		
	SGT	SGR
Light immunity @ 5° incidence	-	> 100 000 lux
Temperature, operation	-20 to +65 °C	
Temperature, storage	-40 to +80 °C	
Sealing class	IP 67	
Certificates	CE	
Safety category	EN 12978:2003 EN 13849-1, Cat. 2, PL d IEC 61496-2, Type 2 ESPE	
Tested	EN 12978:2003 +A1:2009 EN ISO 13849-1:2008 EN 61508:2010 Parts 1-7 IEC 61000-6-2:2005, EN 61000-6-3:2007 +A1:2011 IEC 61326-3-1:2008	

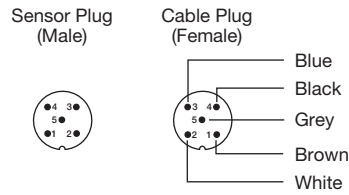
Available Types								
	Housing Length	Active Height	Number of Channels	Channel Placement	Connection		15 m cable	0.5 m cable with 5 pin, M12 plug
							Order Reference	
Transmitter	1928 mm	1800 mm	40	C1	-	-	SGT 15-193-040-C1-E-00-15	SGT 15-193-040-C1-E-00-0.5-J5
			28	D1			SGT 15-193-028-D1-E-00-15	SGT 15-193-028-D1-E-00-0.5-J5
			16	E1			SGT 15-193-016-E1-E-00-15	SGT 15-193-016-E1-E-00-0.5-J5
	2288 mm	2160 mm	48	C1			SGT 15-229-048-C1-E-00-15	SGT 15-229-048-C1-E-00-0.5-J5
			30	D1			SGT 15-229-030-D1-E-00-15	SGT 15-229-030-D1-E-00-0.5-J5
			18	E1			SGT 15-229-018-E1-E-00-15	SGT 15-229-018-E1-E-00-0.5-J5
	2648 mm	2520 mm	56	C1			SGT 15-265-056-C1-E-00-15	SGT 15-265-056-C1-E-00-0.5-J5
			32	D1			SGT 15-265-032-D1-E-00-15	SGT 15-265-032-D1-E-00-0.5-J5
			20	E1			SGT 15-265-020-E1-E-00-15	SGT 15-265-020-E1-E-00-0.5-J5
Receiver	1928 mm	1800 mm	40	C1	Solid State Relay	LO (NC)	SGR 15-193-040-C1-E-09-5	SGR 15-193-040-C1-E-09-0.5-J5
			28	D1			SGR 15-193-028-D1-E-09-5	SGR 15-193-028-D1-E-09-0.5-J5
			16	E1			SGR 15-193-016-E1-E-09-5	SGR 15-193-016-E1-E-09-0.5-J5
	2288 mm	2160 mm	48	C1			SGR 15-229-048-C1-E-09-5	SGR 15-229-048-C1-E-09-0.5-J5
			30	D1			SGR 15-229-030-D1-E-09-5	SGR 15-229-030-D1-E-09-0.5-J5
			18	E1			SGR 15-229-018-E1-E-09-5	SGR 15-229-018-E1-E-09-0.5-J5
	2648 mm	2520 mm	56	C1			SGR 15-265-056-C1-E-09-5	SGR 15-265-056-C1-E-09-0.5-J5
			32	D1			SGR 15-265-032-D1-E-09-5	SGR 15-265-032-D1-E-09-0.5-J5
			20	E1			SGR 15-265-020-E1-E-09-5	SGR 15-265-020-E1-E-09-0.5-J5

Note: Different test input configurations are available upon request.

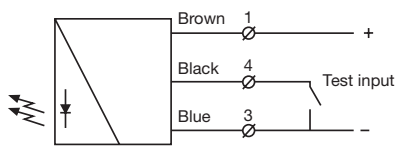
Connections

	Cable	M12 Plug / Cable
Supply +	Brown	Pin 1 / Brown
Supply -	Blue	Pin 3 / Blue
SGT test input	Black	Pin 4 / Black
SGR test input	White	Pin 2 / White
SGR output	Black	Pin 4 / Black
SGR output	Black	Pin 5 / Black

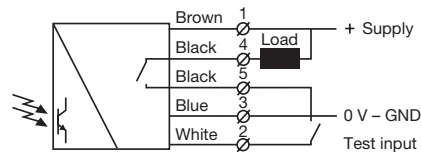
5 pin, M12



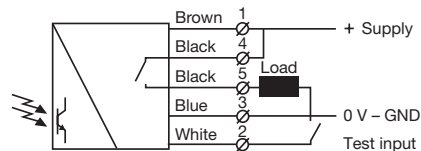
Wiring Diagrams



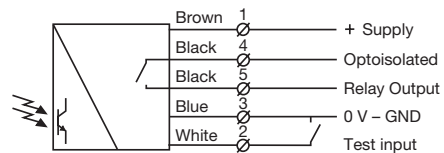
SGT 15
Connect black wire to '-' to activate test input.



SGR 15
Load as NPN output

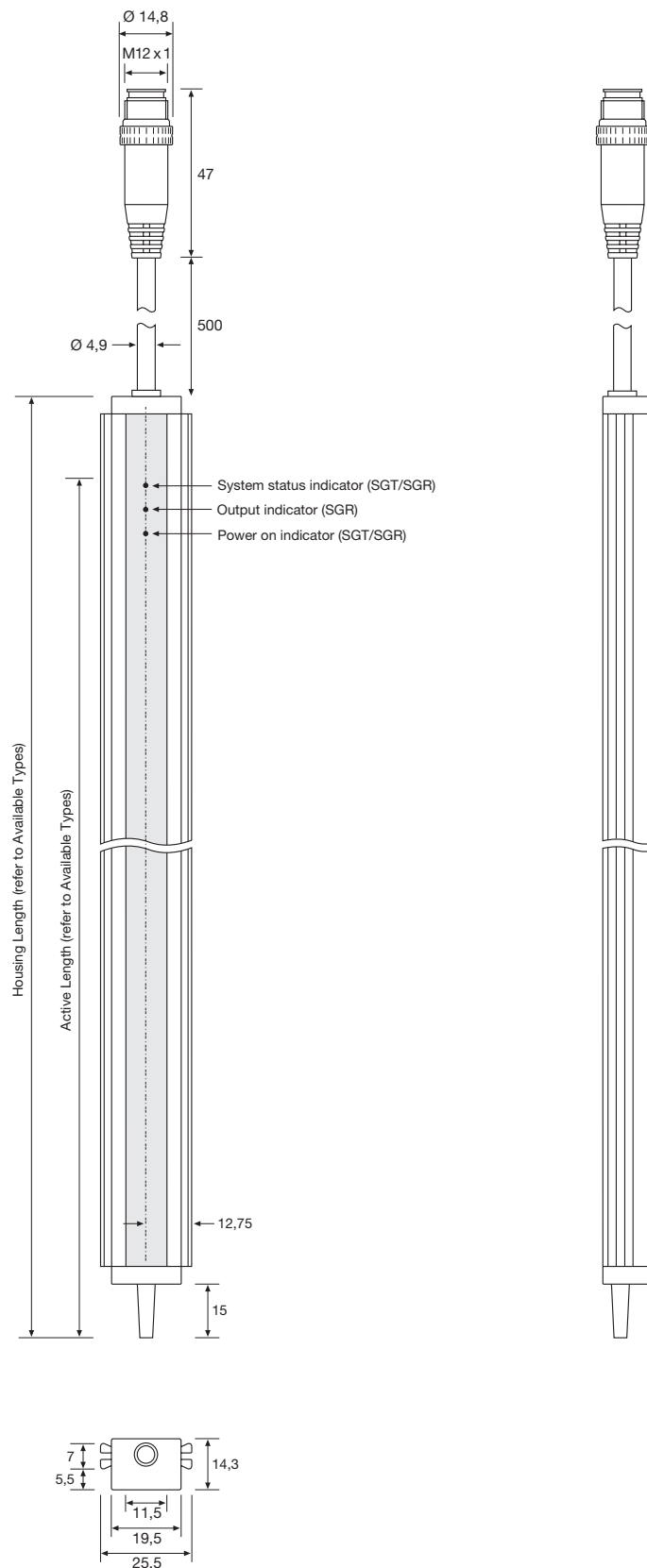


SGR 15
Load as PNP output



SGR 15
Solid state relay output

Dimensions and Descriptions

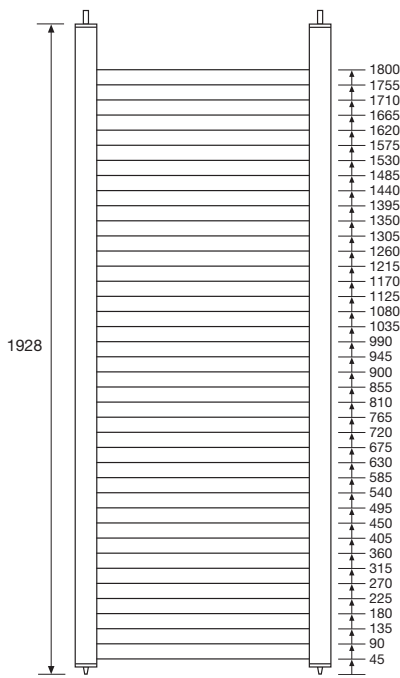


Note: Drawing shows model with M12 plug

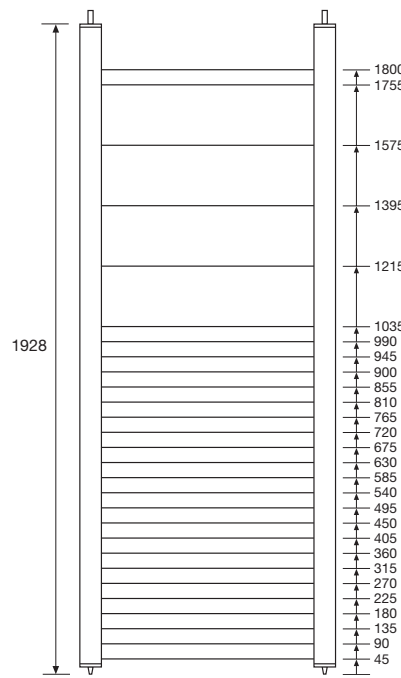
(Units in mm)

Beam Patterns

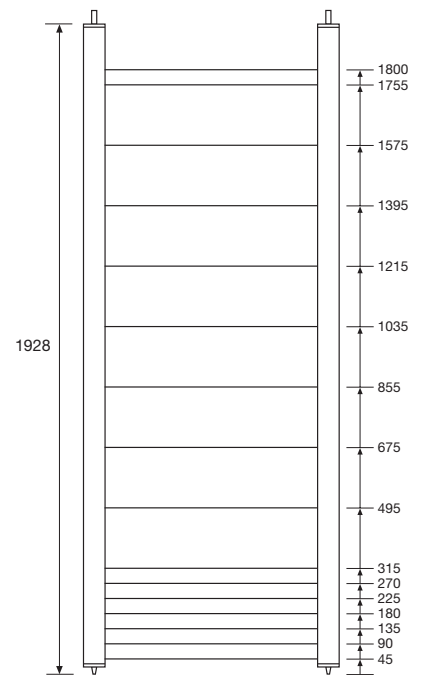
1928 mm housing length



C1

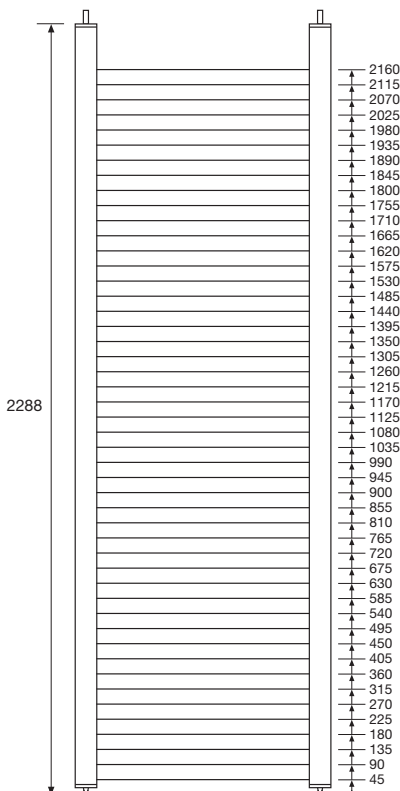


D1

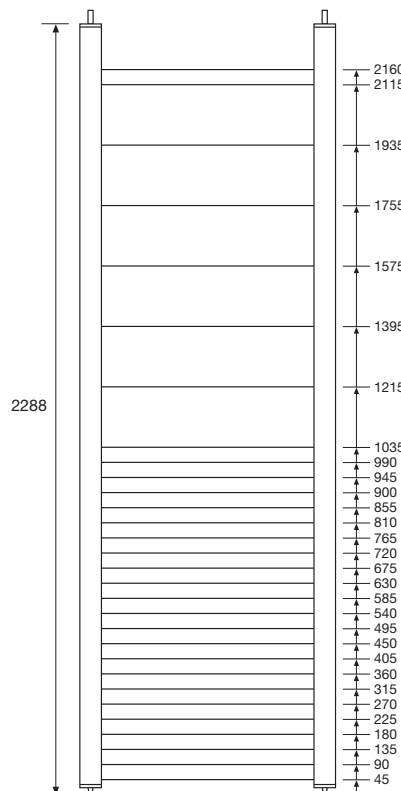


E1

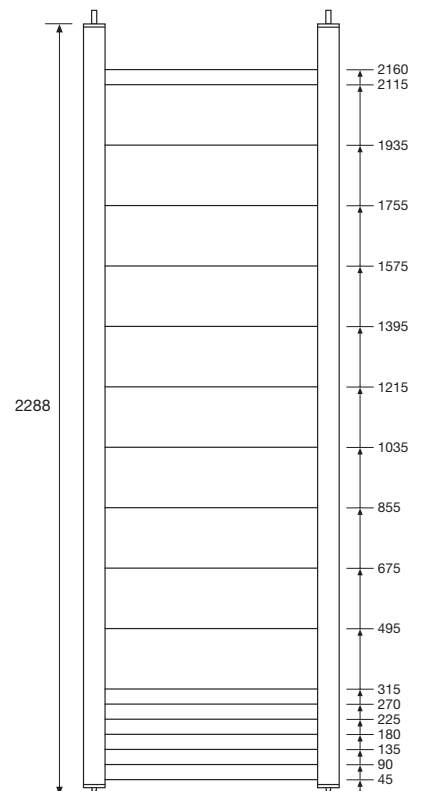
2288 mm housing length



C1



D1

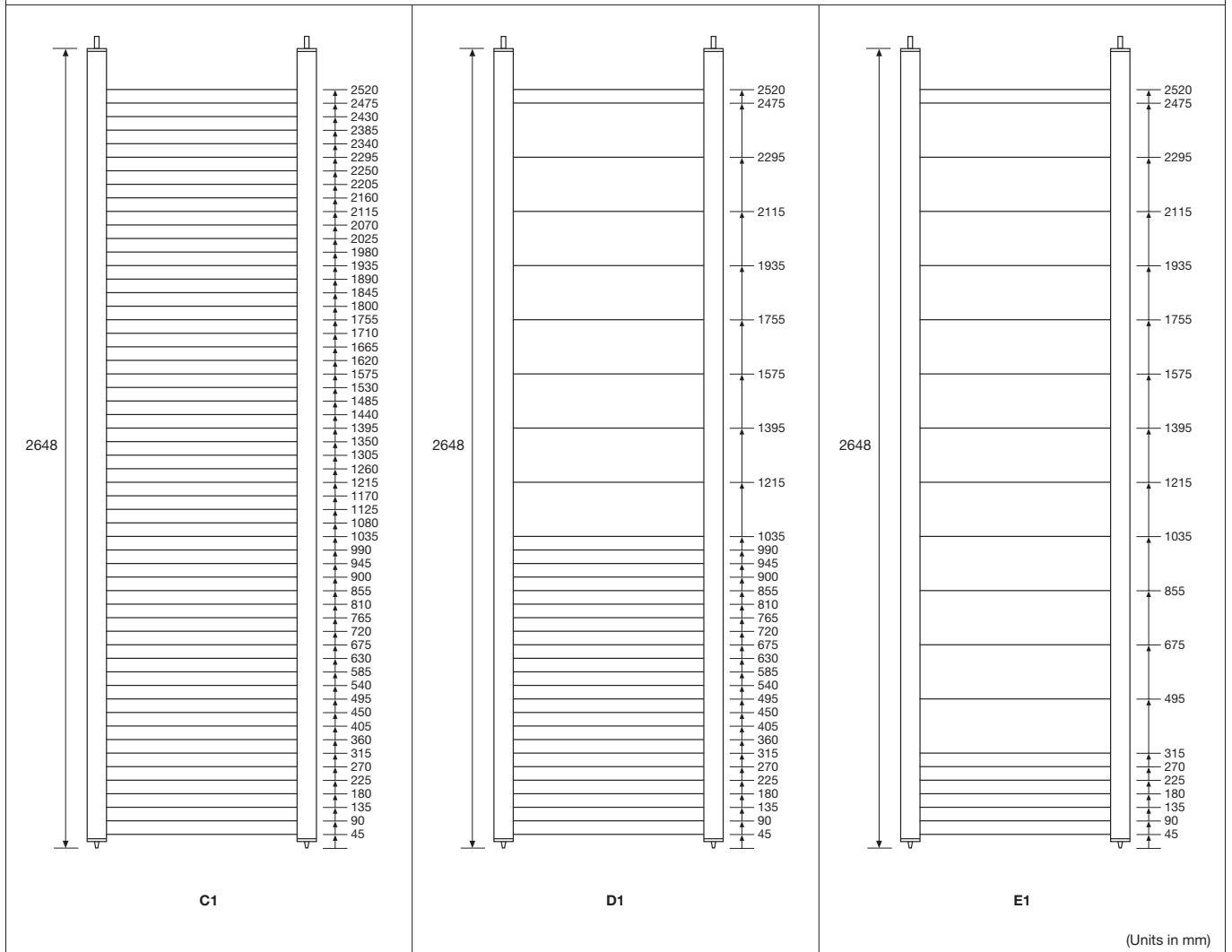


E1

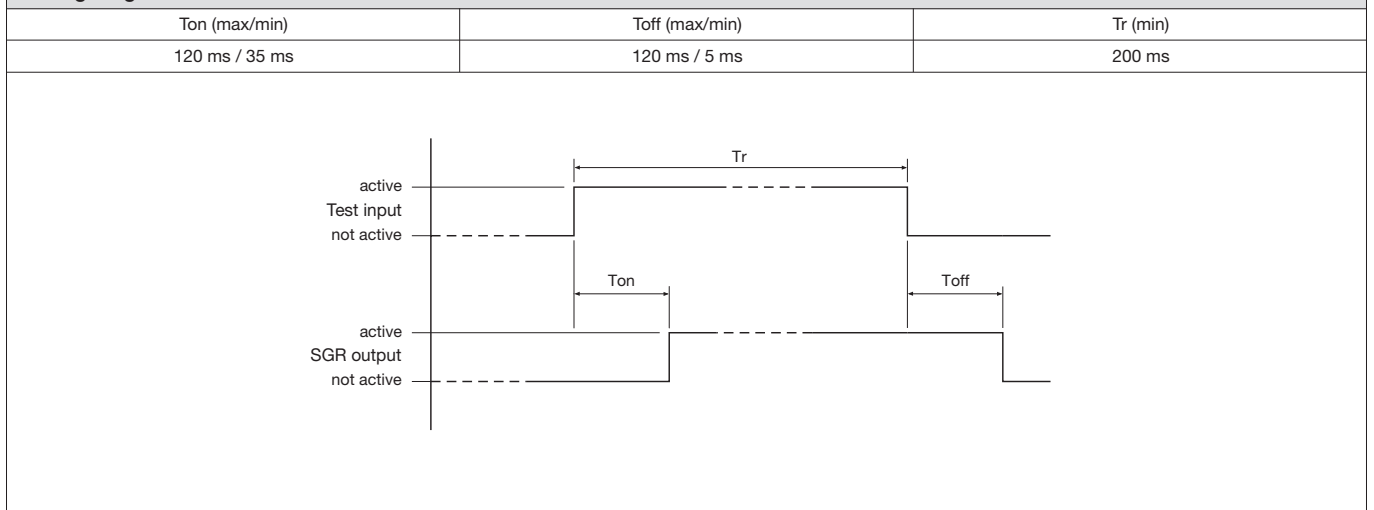
(Units in mm)

Beam Patterns

2648 mm housing length

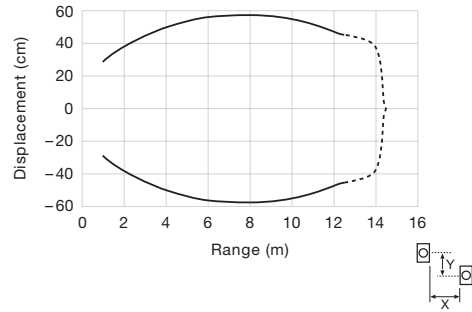


Timing Diagram

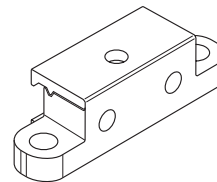
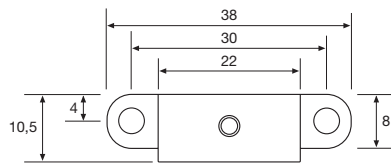
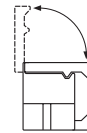
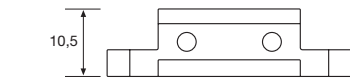


Sensing Characteristics

Parallel Displacement



Mounting Brackets

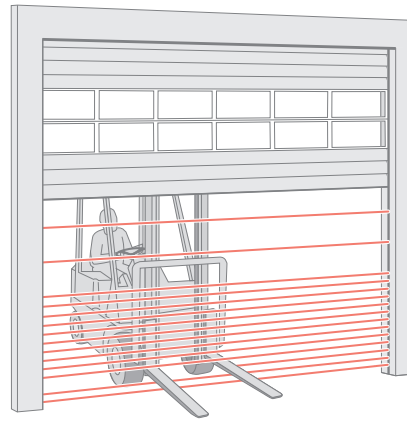


TR MC38 E
Plastic material
(4 pcs included with each set)

(Units in mm)

Telco reserves the right to change specifications without notice.

Applications



OVERHEAD DOOR